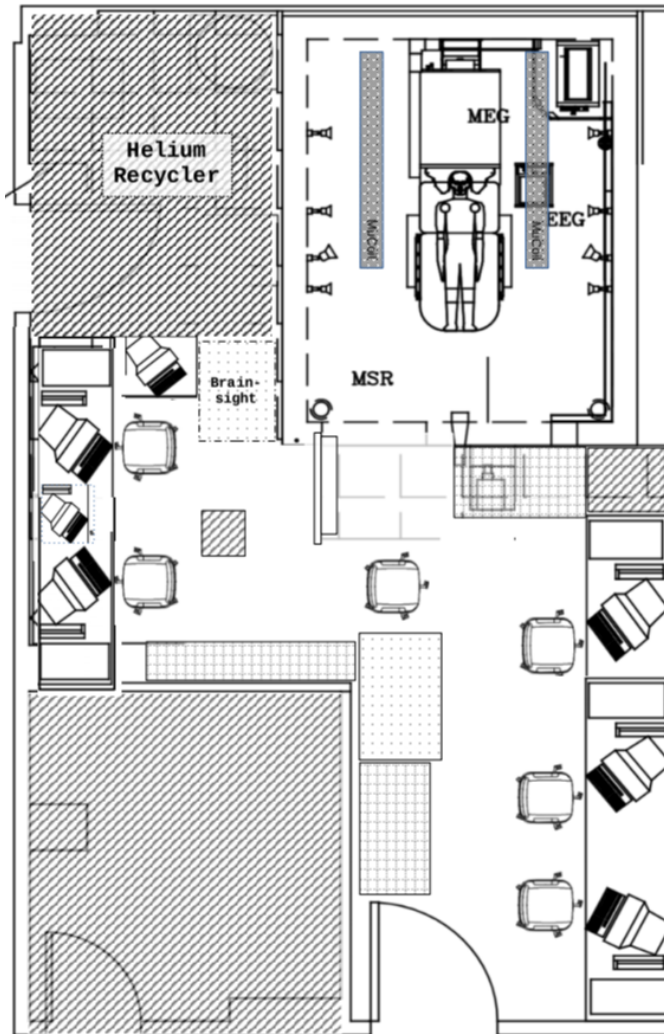


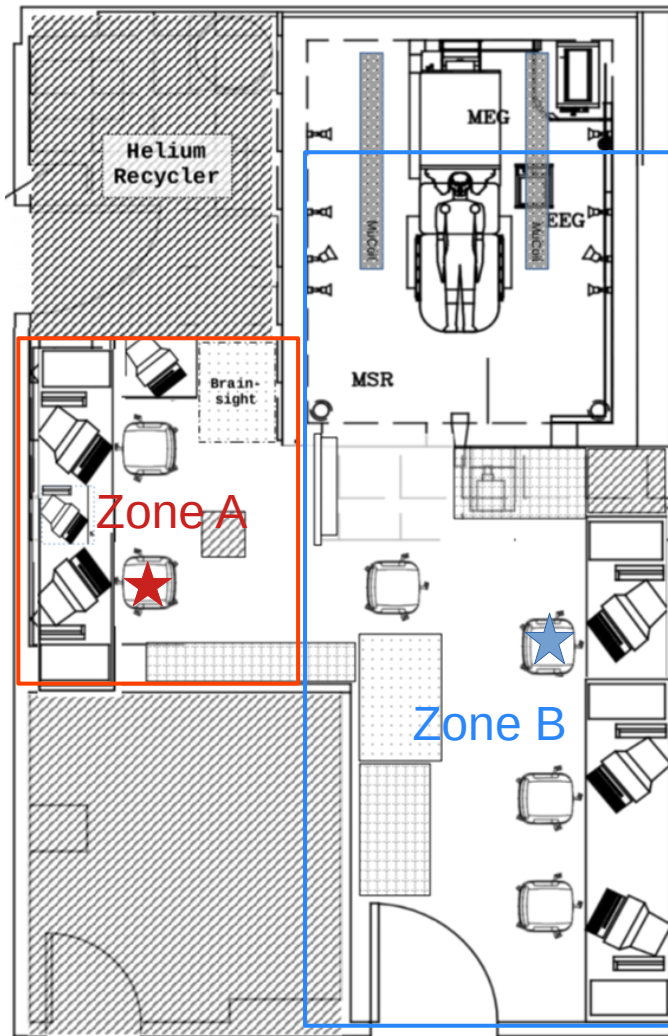
MEG Core Facility COVID-19 Safety Guidelines



MEG Suite Layout: TOP VIEW

- The MEG Lab is very narrow and not conducive to physical distancing; however, with proper precautions, we can satisfy the requirements of both physical distancing and MEG scan protocol (“Two-person Rule”).
- These diagrams are a supplement to the MEG Core Facility Covid-19 Safety Guidelines and outline the suggested investigator distancing in 1) Healthy Volunteers studies or 2) Clinical studies requiring medical coverage.
- As a general rule, only two MEG-experienced investigators at a time are allowed for Healthy Volunteer studies; two MEG-experienced investigators plus a nurse for clinical studies.
- If your study requires more than the maximum number of investigators allowed in the MEG Lab, please discuss your needs with the MEG Core Director.

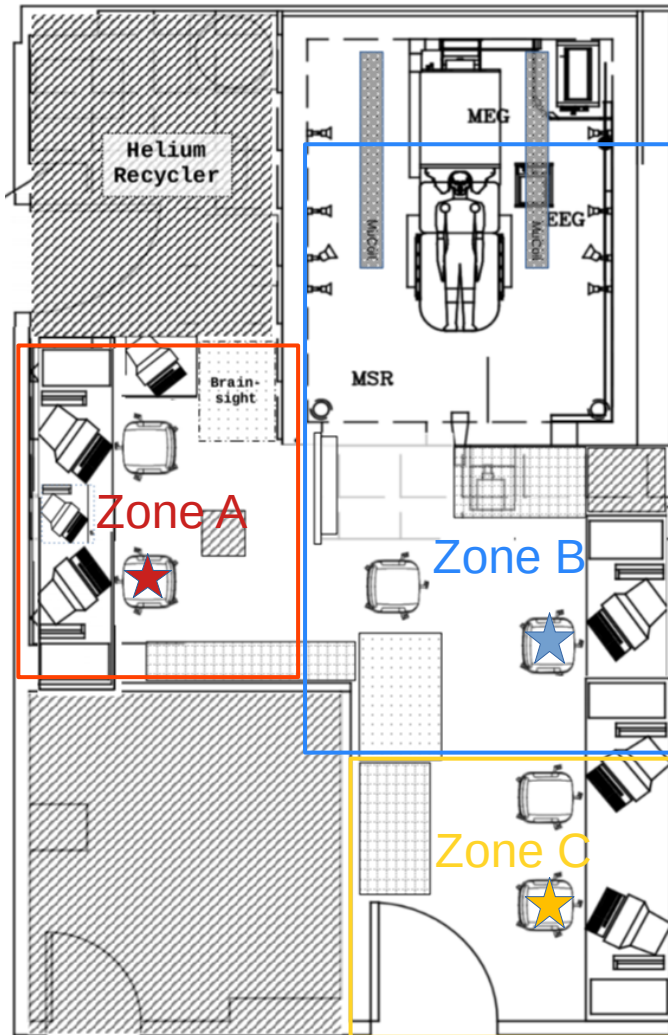
1. Healthy Volunteer or Clinical Studies Not Requiring Medical Coverage



MEG Suite Layout: TOP VIEW

- Zone A (Red) – MEG Controls
 - This investigator controls data acquisition (ACQ), Patient Monitor and Intercom, and Stimulus Presentation, as well as the Eye Tracker, if used.
 - MEG Core Staff can fulfill this role if your study group does not have sufficiently experienced staff.
- Zone B (Blue) – Patient Prep Area
 - This investigator is in charge of all physical patient contact. This includes setting up the patient for the MEG scan (head coils, demetaling, exchanging face masks), situating them in the MEG helmet, and assisting them after the scan.
 - During the scan, this investigator will sit at the bank of computers on the right hand side (marked with a star), where they can observe the patient monitor in Zone A. This will allow the other investigator to focus on the experimental controls.

2. Clinical Studies Requiring Medical Coverage



MEG Suite Layout: TOP VIEW

- Zone A (Red) – MEG Controls
 - This investigator controls data acquisition (ACQ), Patient Monitor and Intercom, and Stimulus Presentation, as well as the Eye Tracker, if used.
 - MEG Core Staff can fulfill this role if your study group does not have sufficiently experienced staff.
- Zone B (Blue) – Patient Prep Area
 - This investigator is in charge of all physical patient contact. This includes setting up the patient for the MEG scan (head coils, demetaling, exchanging face masks), situating them in the MEG helmet, and assisting them after the scan.
 - During the scan, this investigator will sit at the bank of computers across from the control center, where they can observe the patient monitor in Zone A. This will allow the other investigator to focus on the experimental controls.
- Zone C (Yellow) – Medical Coverage Station
 - For maximal physical distancing, the person providing medical coverage will need to sit by the MEG Lab door.
 - If the medical personnel needs to manage biofeedback equipment or if additional personnel are required, the study team may need to propose an alternate plan to maximize personal distancing as well as patient safety.